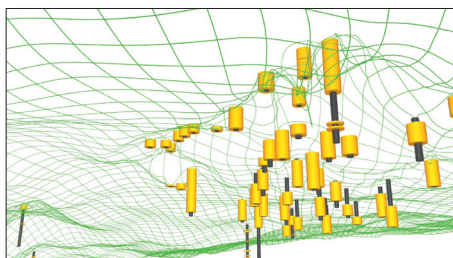


Never before has it been so easy for investors to visualize your projects' resources, your valuation, your drill data and your blue sky potential — all at once! With **Life of Mine Animations**, guide your investors through the steps of mine development: From drilling to extraction, and even reclamation there is inherent value in your projects. Now you have the right tool to demonstrate your value.

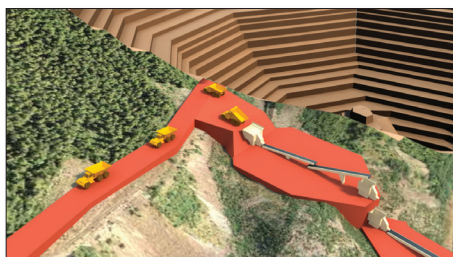
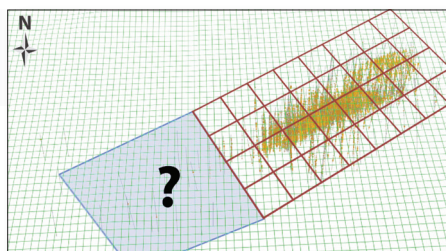
RI **Life of Mine Animations** use industry standard animation software to turn your existing geological and engineering data into powerful IR tools.

Do an aerial fly by of your project to show its size, infrastructure and geological footprint.



Fly your investors underground to show them three dimensional drill results with mineralization and valuations.

Easily demonstrate bluesky potential, future drill plans and even potential mining scenarios.



Create the mine before their eyes, to show them the value your deposits contain, your mine life, strip ratio, capital payback and more.

Finally, practice corporate social responsibility by closing the mine with state of the art reclamation practices.



There is no IR tool more vivid than **Life of Mine Animations**. SHOW investors your value, with **Life of Mine Animations**, by Resource Intelligence.

#### Western Division Sales:

Grant Geall: 778-995-8138

Office: 604-688-6400

[grant@resourceintelligence.net](mailto:grant@resourceintelligence.net)

#### Eastern Division Sales:

Tracey Sand

705-718-9561

[tracey@resourceintelligence.net](mailto:tracey@resourceintelligence.net)

#### New York Division Sales:

Linda Spione

[linda@resourceintelligence.net](mailto:linda@resourceintelligence.net)

#### Editorial Team:

Doug Hadfield - Executive Editor

778-895-1755

[doug@resourceintelligence.net](mailto:doug@resourceintelligence.net)